

October 2, 2009

Kentucky Department for Environmental Protection
Division of Waste Management
Underground Storage Tank Branch
Closure Section
200 Fair Oaks Lane
Frankfort, KY 40601

Attention: Fayette County Reviewer

**Re: *Closure Assessment Report
Dairy Mart #3215
4731 Georgetown Road
Lexington, Kentucky 40511
Facility ID Number 5285-034/ Agency Interest Number 62169***

***Fayette County: Item No. 7-122.50
Parcel 47
Linebach Funkhouser Project Number 186-09***

Dear Sir/Madame:

Linebach Funkhouser, Inc. (LFI) is pleased to submit this *Closure Assessment Report* for the above referenced site. Franklin-Price, Inc. of Louisville, Kentucky (Kentucky Licensed #LUG-0000184) performed underground storage tank (UST) system removal and closure activities at the referenced site. Closure samples were collected by LFI and submitted for laboratory analysis according to the Kentucky Department for Environmental Protection (KDEP), Division of Waste Management, UST Branch, *UST Tank System Closure Outlined* dated August 2006.

On August 25, 2009, the *14-day Notice of Intent To Close the USTs* was filed with the KDEP Franklin County Regional office. Three, gasoline and one kerosene UST system were removed from the site on September 14 and 15, 2009. The following sections describe the details of these activities.

SUMMARY OF TANK REMOVAL ACTIVITIES

Site Description: The site, Dairy Mart #3215, is located at 4731 Georgetown Road in Lexington, Fayette County, Kentucky. One, 10,000-gallon gasoline and two, 6,000-gallon gasoline, single wall, steel, and

one 2,500-gallon kerosene, double wall, fiberglass, registered UST systems were located at the site. Surrounding properties are used primarily for commercial and residential purposes. A site location map is shown in the attached Figure 1. All tank systems were located in a common pit as shown in the attached Figures 2 and 3.

Tanks Removed and Condition: On September 14 and 15, 2009, one, 10,000-gallon gasoline and two, 6,000-gallon gasoline, single wall, steel, and one 2,500-gallon kerosene, double wall, fiberglass USTs and associated steel piping were removed from a common pit. Fluids contained within the USTs were evacuated from the tanks utilizing a vacuum truck by Midwest Environmental Services, Inc. of Cincinnati, Ohio prior to removal. The tanks and piping were observed to be in fair condition upon removal. After the tanks were removed by Franklin-Price, Inc., the excavation was backfilled with clean, crushed stone material equivalent to the volume of the tanks and the stock-piled soils.

Soil and Bedrock Conditions: Native soils encountered during the removal of the tanks and product lines consisted primarily of silty clays. Bedrock was encountered during the removal activities at a maximum depth of approximately 14 feet below ground level (bgl); however, closure soil samples from the bottom of the pit were able to be collected for analysis.

Groundwater Conditions: Groundwater was not encountered during the closure activities at a depth 14 feet bgl (equivalent to approximately 1 meter below the tank pit bottom).

Soil Analysis: In accordance with referenced KDEP sampling protocol, a total of 14 composite soil samples were collected from the common excavation as follows:

- Tank Pit # 1 – (8) wall samples, (3) bottom samples, (1) piping trench sample, and (2) stockpile samples

Soil samples collected from the common tank pit were analyzed for benzene, toluene, ethylbenzene, and total xylenes (BTEX) by EPA Method 8260B. One piping trench sample was collected from beneath the kerosene dispenser but no samples were collected from the gasoline dispenser(s) since the pump islands were located above the footprint of the common tank pit. A summary of soil sample analytical results is provided in Table 1 and shown on Figure 3. Soil samples were analyzed by Environmental Science Corp. in Mt. Juliet, Tennessee. Laboratory analytical data sheets and chain of custody record are provided in Appendix A.

Tank Contents: Approximately 85 gallons of pumpable liquid was evacuated from the interior of the USTs and product lines prior to removal. Disposal documentation is provided in Appendix B.

Tank Disposal: The steel USTs were removed by Franklin-Price, Inc for later disposal. The fiberglass UST and piping were disposed of at the Benson Valley Landfill near Frankfort, Kentucky. Disposal documentation is provided in Appendix C. A disposal manifest associated with the scrap steel will be provided at a later date.

Accompanying this report are the materials required for closure reporting to the KDEP, including Kentucky Geological Survey water well radius search, *KDEP Notification for UST System Form*, and *KDEP Closure Report Form/Permanent Closure Checklist Form*. These records are presented in Appendix D, Appendix E, and Appendix F, respectively.

SUMMARY AND RECOMMENDATIONS

Based on the completed *KDEP Classification Facility Guide* provided in Appendix G, the site soils should be classified under Class III, Soil Table I. No BTEX constituents were detected above Class III, Soil Table I allowable levels. Photographs are provided in Appendix H. Groundwater was not encountered in the excavation at a depth of 14 feet below ground surface. In accordance with the completed classification guide, groundwater is not required to be investigated.

Should you have any questions, please contact us at your convenience at (502) 895-5009.

Sincerely,



Russell H. Brooks, P.G.
Senior Engineer
Kentucky Registered Geologist No. 3228



R. William Johnston, P.G.
Principal Geologist
Kentucky Registered Geologist No. 308

Attachments:

Tables

Table 1 – Summary of Soil Sample Analytical Results

Figures

Figure 1 – Site Location Map

Figure 2 – Site Plan

Figure 3 – Site Plan Showing UST Pit and Analytical Results

Appendices

Appendix A – Laboratory Analytical Data Sheets / Chain of Custody

Appendix B – Tank Contents Disposal Records

Appendix C – Tank Disposal Records

Appendix D – Kentucky Geological Survey Well and Spring Search Results

Appendix E – KDEP *Notification for Underground Storage Tank System Form*

Appendix F – KDEP *Closure Report Form / Permanent Closure Checklist Form*

Appendix G – KDEP *Facility Classification Guide*

Appendix H – Photographs

Tables

Table 1: Summary of Soil Sample Analytical Results

CONSTITUENTS	Concentration (mg/kg)										KDEP Class III Table I	
	NW-1 9/14/2009	NW-2 9/15/2009	SW-1 9/14/2009	SW-2 9/15/2009	EW-1 9/14/2009	EW-2 9/15/2009	WW-1 9/15/2009	WW-2 9/15/2009	PT-1 9/14/2009			
BTEX by EPA Method 8021B												
Benzene	<0.0025	<0.0025	<0.0025	<0.0025	<0.0025	<0.0025	<0.0025	<0.0025	<0.0025	<0.0025	<0.0025	2
Ethylbenzene	<0.025	<0.025	<0.025	<0.025	<0.025	<0.025	<0.025	<0.025	<0.025	<0.025	<0.025	30
Toluene	<0.0025	<0.0025	<0.0025	<0.0025	<0.0025	<0.0025	<0.0025	<0.0025	<0.0025	<0.0025	<0.0025	18
Xylenes (total)	<0.0075	<0.0075	<0.0075	<0.0075	<0.0075	<0.0075	<0.0075	<0.0075	<0.0075	<0.0075	<0.0075	50

CONSTITUENTS	Concentration (mg/kg)						KDEP Class III Table I
	PB-1 9/14/2009	PB-2 9/15/2009	PB-3 9/15/2009	SP-1 9/15/2009	SP-2 9/15/2009		
BTEX by EPA Method 8021B							
Benzene	<0.0025	<0.0025	<0.0025	<0.0025	<0.0025	<0.0025	2
Ethylbenzene	<0.025	<0.025	<0.025	<0.025	<0.025	<0.025	30
Toluene	<0.0025	<0.0025	<0.0025	<0.0025	<0.0025	<0.0025	18
Xylenes (total)	<0.0075	<0.0075	<0.0075	<0.0075	<0.0075	<0.0075	50

Notes:

NW-1 - Composite soil sampling location

PB - Pit Bottom

SP - Stockpile

mg/kg = milligrams per kilogram

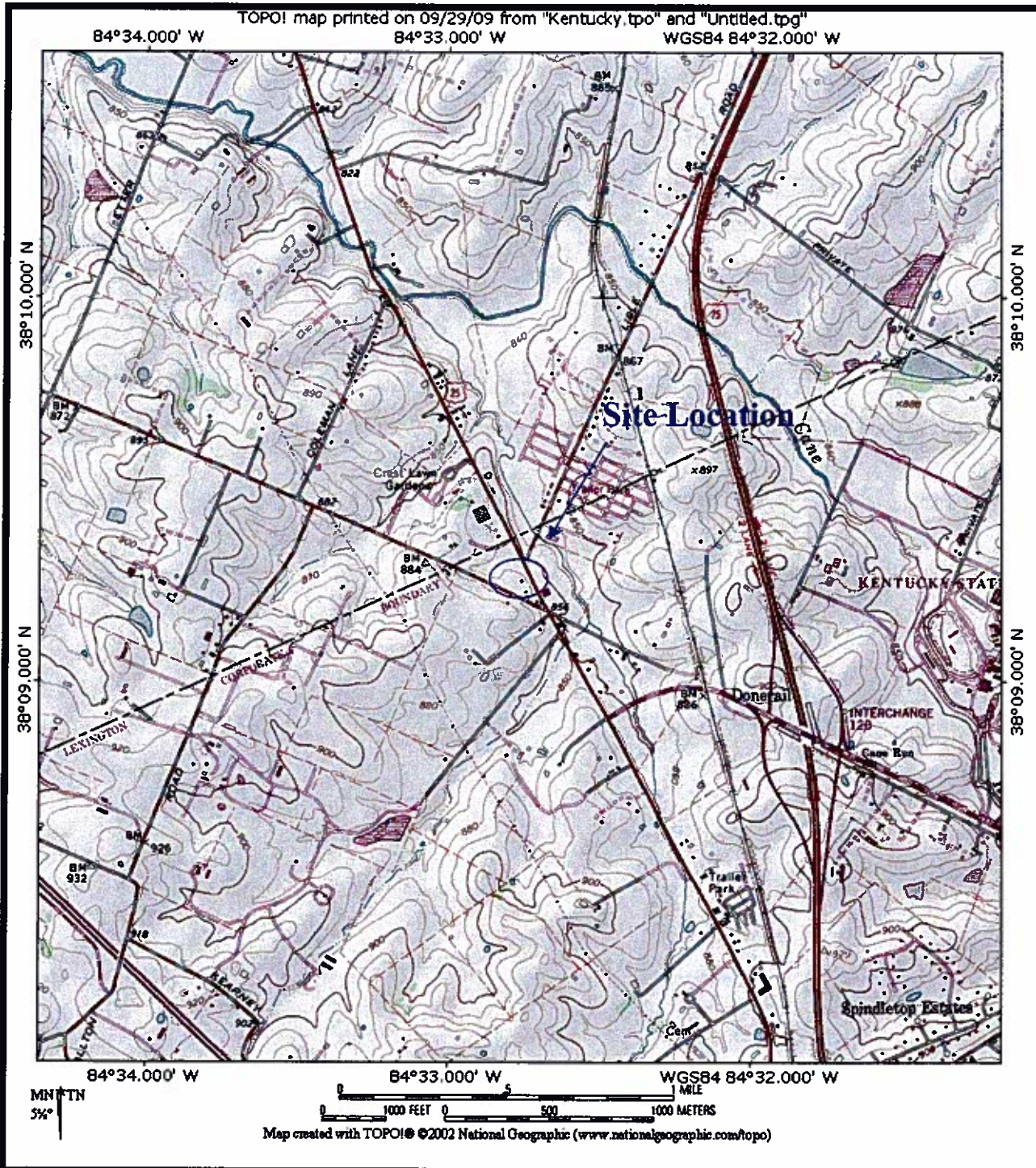
Laboratory analysis performed by Environmental Science Corporation in Mt. Juliet, Tennessee

SOURCE:

Kentucky Division of Waste Management, UST Branch, Class III Table I.

Prepared By: RHB 9/23/09
 Checked By: RWJ 10/1/09

Figures



Dairy Mart #3215
 4731 Georgetown Road
 Lexington, Kentucky
 Agency Interest #62169



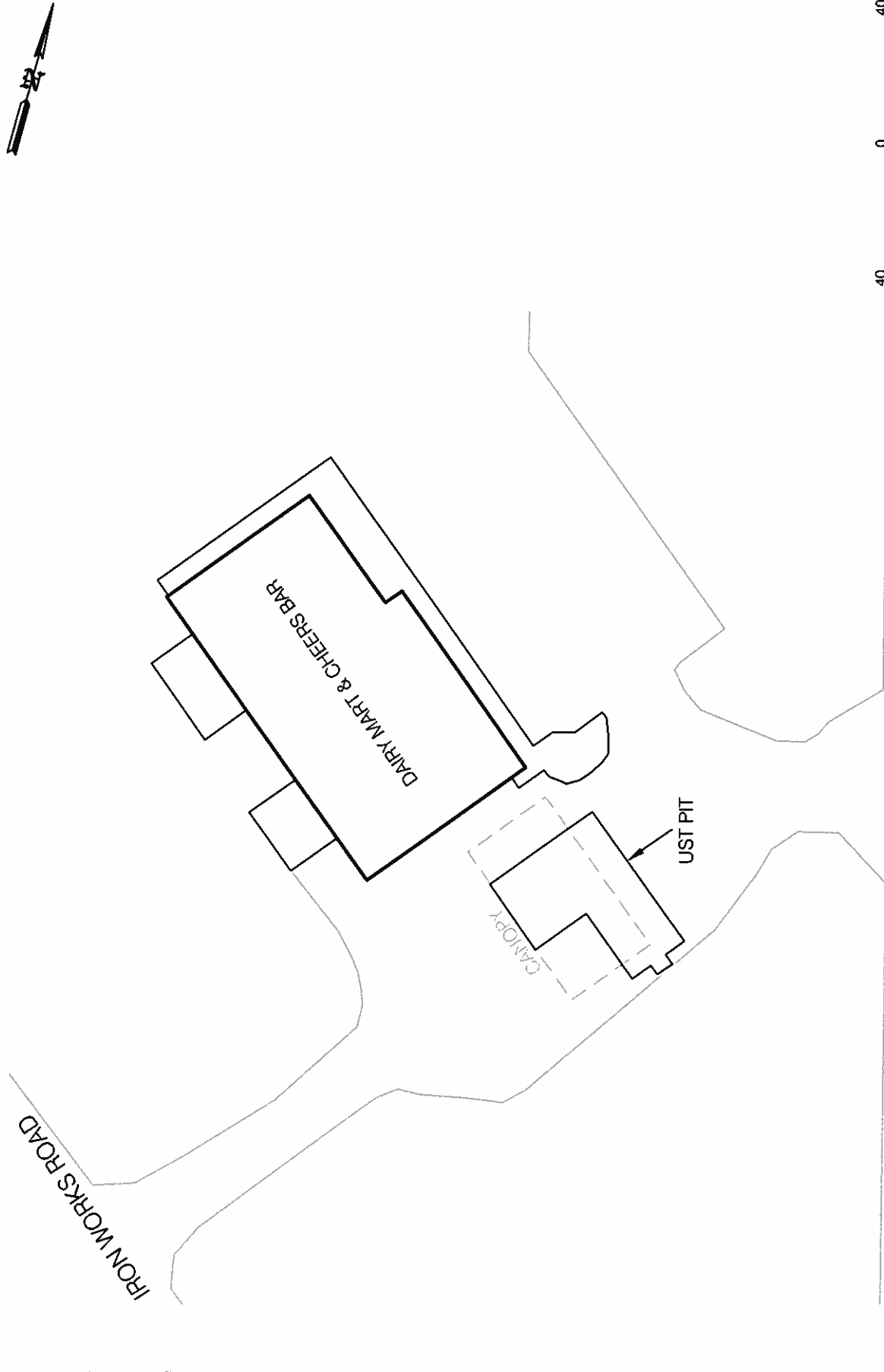
Site Location Map

USGS Topographical Map
 1993 Georgetown, KY

PROJECT NO: 186-09

Scale:
 1:24,000

Figure:
 1



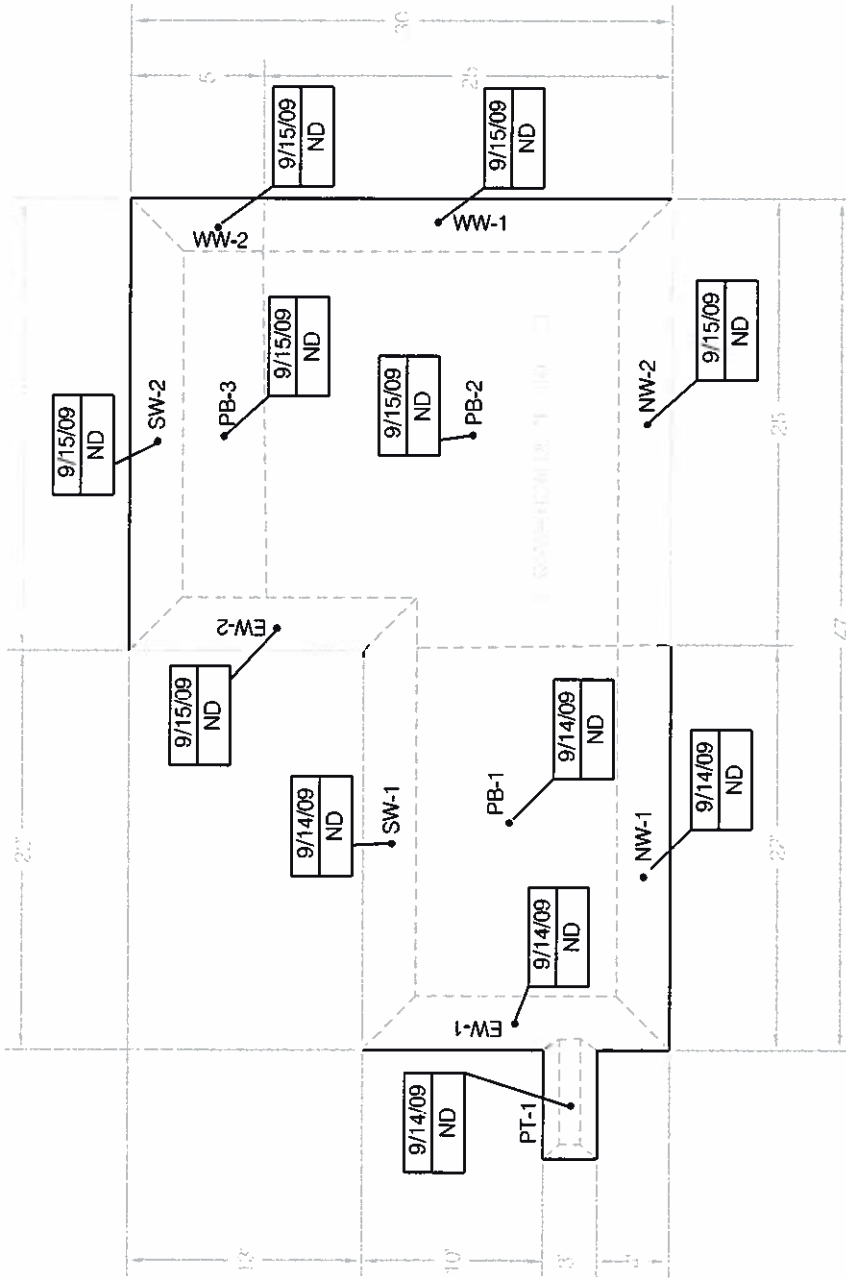
PROJEC' NO: 186-09	FILENAME: 18609
DRAWN BY: CCD	FIGURE: 2
PRINT DATE: 9/27/09	

SITE MAP



Linebach Funkhouser, Inc.
environmental compliance & consulting

DAIRY MART #3215
4731 GEORGETOWN ROAD
LEXINGTON, KENTUCKY
AI # 62169



LEGEND

- NW-1 - COMPOSITE SOIL SAMPLE
- ND -
- B - < 0.0025
- T - < 0.025
- E - < 0.0025
- X - < 0.0075

ALL RESULTS REPORTED IN mg/kg



PROJECT No: 186-09	FILENAME: 18609
DRAWN BY: CCD	FIGURE: 3
PRINT DATE: 9/27/09	

**UST EXCAVATION SHOWING
ANALYTICAL RESULTS**

Linebach Funkhouser, Inc.
environmental compliance & consulting

DAIRY MART #3215
4731 GEORGETOWN ROAD
LEXINGTON, KENTUCKY
AI # 62169

Appendix A
Laboratory Analytical Data Sheets / Chain of Custody

Appendix B
Tank Contents Disposal Records

Appendix C
Tank Disposal Records

Appendix D
Kentucky Geological Survey Well Search Results

Appendix E
KDEP Notification for Underground Storage Tank System

Appendix F

KDEP Closure Report Form / Permanent Closure Checklist Form

Appendix G
KDEP Facility Classification Guide

Appendix H
Photos